



MONTHLY MEMBERSHIP PROGRESS REPORT

District 11 D1

Results as of: 05/31/2019

GMT: STEVE ANTON

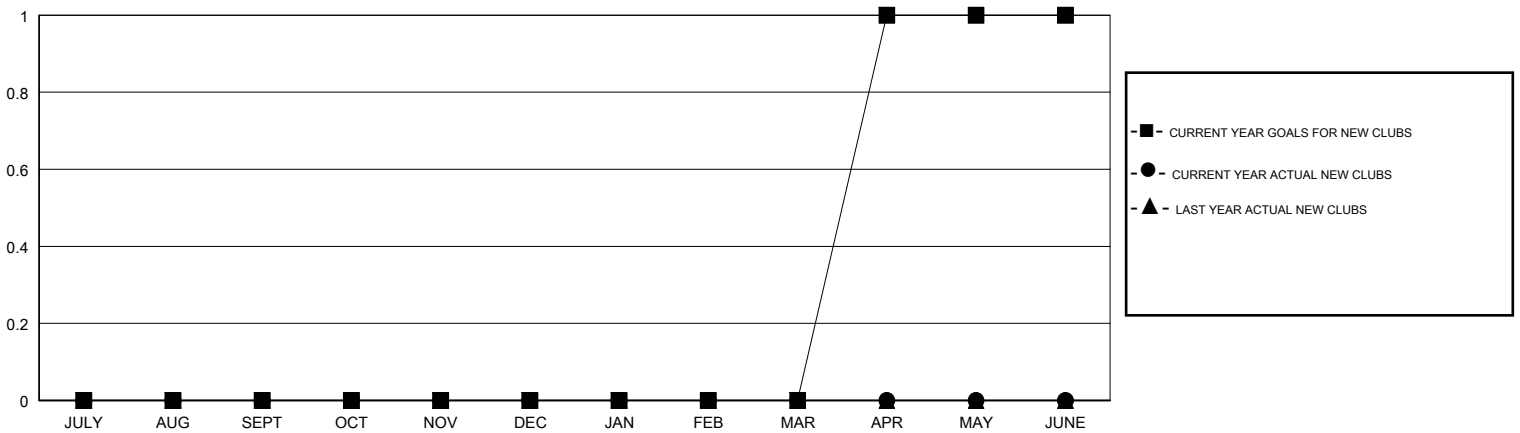
LOCATION MICHIGAN

GMT CA

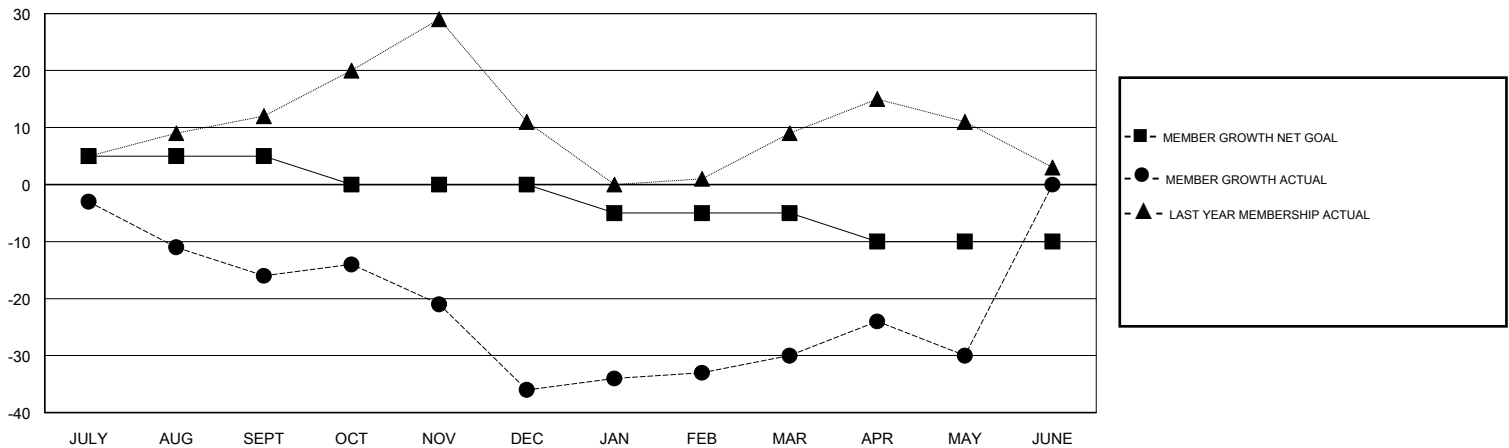
Clubs			
RESULTS FOR 2018-2019			
QUARTER	NEW CLUB GOAL	NEW CLUBS	DROPPED CLUBS
JULY/AUG/SEPT	0	0	0
OCT/NOV/DEC	0	0	0
JAN/FEB/MAR	0	0	0
APR/MAY/JUNE	1	0	0

Members			
RESULTS FOR 2018-2019			
QUARTER	MEMBER GROWTH NET GOAL	MEMBER GROWTH ACTUAL	DROPPED MEMBERS ACTUAL (including transfers)
JULY/AUG/SEPT	5	8	22
OCT/NOV/DEC	-5	25	45
JAN/FEB/MAR	-5	22	15
APR/MAY/JUNE	-5	20	18

GOALS AND ACTUAL NEW CLUBS CUMULATIVE



GOALS AND ACTUAL MEMBERS CUMULATIVE



DROPPED CLUBS: 0	22 CLUBS OF 38 ADDED 1 OR MORE NEW MEMBERS	<u>GENDER DISTRIBUTION</u> MALE 813 (70.82%) FEMALE 335 (29.18%) Women Percentage Fiscal Year Goal: 30%
<u>DROPPED MEMBERS</u> DECEASED 26 CLUB CANCELLED 0 OTHER 74 TOTAL 100	CLICK HERE FOR CUMULATIVE MEMBERSHIP DATA	TOTAL FAMILY UNIT MEMBERS 257 FAMILY MEMBERS PAYING HALF DUES 130